

# BOARD OF SUPERVISORS

Madison County, Mississippi

E-911 Administration Office

146 W. Center Street, Room 203, PO Box 608, Canton, MS 39046

T: (601) 859-6485 F: (601) 859-4743

Date: March 27, 2015

To: Madison County Board of Supervisors

From: E-911 Administration

Re: Consent  
Road Registry Change

Our office has found an error in the Madison County Road Registry. The road named Oak Bend Drive located in the city limits of Madison (Stonegate Subdivision) was actually platted and accepted as "Oak Bend". I have attached a copy of the filed plat for your review.

It is this office's recommendation that a change be made to the Madison County Road Registry to reflect this correction.

# STONEGATE PART I

SECTION 9, T.7N.-R.2E.  
MADISON COUNTY, MISSISSIPPI

ASTRONOMIC  
NORTH

SCALE: 1"=100'

**DESCRIPTION OF STONEGATE SUBDIVISION PART I**

A parcel of land situated in the E 1/2 of the SW 1/4 of Section 9, T. 7 N. - R. 2 E., Madison County, Mississippi, and is more particularly described as follows:

Commencing at a concrete monument marking the corner common to Sections 8, 9, 16, & 17, T. 7 N. - R. 2 E., Madison County, Mississippi, run North 89° 31' East along the South line of Section 9 for 1321.06 feet, thence, North 00° 01' West along the East line of the West half of the SW 1/4 of Section 9 for 1268.19 feet to a point, said point hereinafter referred to as the point of beginning,  
Thence, continue North 00° 01' West for 261.0 feet to the center of a ditch,  
Thence, along the center of a ditch North 24° 32' 55" East for 183.92 feet,  
Thence, continue along the center of said ditch North 20° 30' East for 200.26 feet.  
Thence, continue along the center line North 17° 35' East for 700.0 feet,  
Thence, continue North 05° 40' East for 68.0 feet along the center of aforementioned ditch to the South line of Hoy Road,  
Thence, North 87° 47' East for 627.25 feet along the South line of Hoy Road,  
Thence, leaving the South line of Hoy Road run South 00° 01' East for 1200.0 feet,  
Thence, South 89° 59' West for 435.0 feet,  
Thence, North 81° 40' West for 125.0 feet,  
Thence, South 63° 00' West for 106.00 feet,  
Thence, South 10° 40' West for 125.14 feet,  
Thence, South 89° 59' West for 315.95 feet to the point of beginning.  
The above described Tract contains 23.39 acres.

**OWNER'S CERTIFICATE**

The undersigned owner of the property shown hereon, hereby adopt this plat as our plan of subdivision and dedicate the street rights-of-way, utilities, and easements as shown to public use forever.

Date 9-SEPT, 1977 Signed [Signature]

**SURVEYOR'S CERTIFICATE**

It is hereby certified that this plat is true and correct and was prepared from an actual survey of the property made by me or under my supervision on the day of SEPT, 1977.

By [Signature]  
Certificate No. 1148



**FILING AND RECORDATION**

STATE OF MISSISSIPPI  
COUNTY OF MADISON

I, Billy V. Cooper, Chancery Clerk, do hereby certify that this duplicate plat of Stonegate Subdivision Part I was filed for record in my office on this 9 day of September, 1977, and was duly recorded in PLAT BOOK 8 at page 17 thereof.

Given under my hand and seal of office on this 9th day of September, 1977.

BILLY V. COOPER, CHANCERY CLERK  
By: [Signature]



**ACKNOWLEDGEMENT**

STATE OF MISSISSIPPI  
COUNTY OF MADISON

Personally appeared before me, the undersigned Chancery Clerk in and for said County and State, J. P. Sartain, Owner, and W. D. Sturdivant, Surveyor, who acknowledged they signed and delivered this plat, on which this certificate appears, as their own act and deed on the day and year herein named.

Given under my hand and seal of office on this 9th day of September, 1977

BILLY V. COOPER, CHANCERY CLERK  
By: [Signature]



**CERTIFICATE OF COMPARISON**

We, Billy V. Cooper, Chancery Clerk, and W. D. Sturdivant, Surveyor, do hereby certify that we have compared this plat of Stonegate Subdivision Part I with the original thereof, and find it to be an exact, true, and correct copy of the whole of said plat.

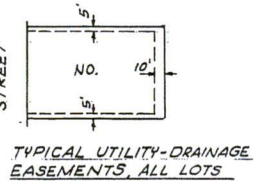
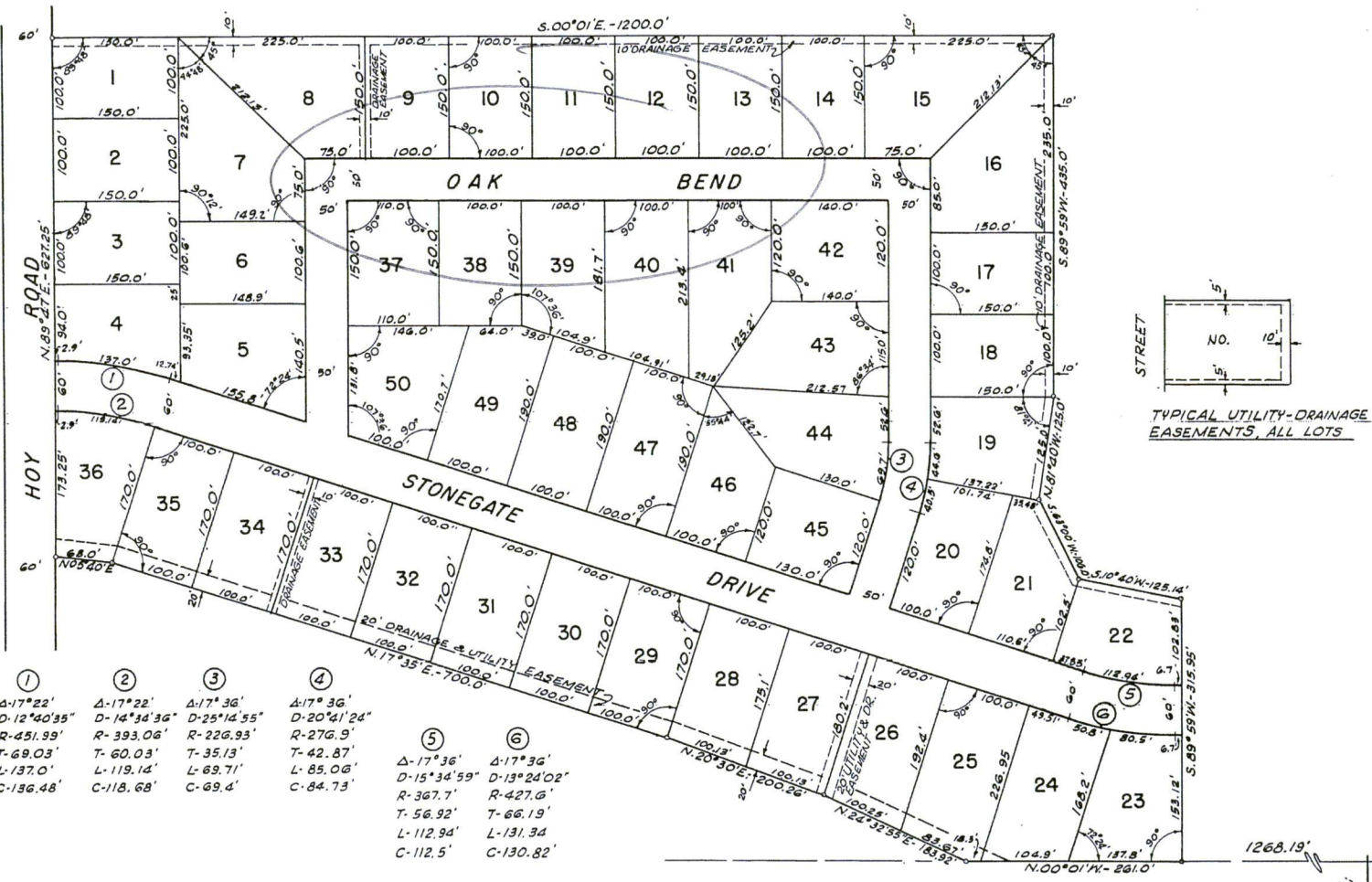
BILLY V. COOPER, CHANCERY CLERK  
[Signature]  
W. D. Sturdivant, Surveyor  
[Signature]



**TOWN'S APPROVAL CERTIFICATE**

I hereby certify that this is a true copy and that this plat was approved by the Mayor and Board of Aldermen in session on this the 9 day of Sept, 1977.

Signed [Signature]  
Mayor  
[Signature]  
Town Clerk



① Δ-17°22' D-12°40'35" R-451.99' T-69.03' L-137.0' C-136.48'	② Δ-17°22' D-14°34'36" R-393.06' T-60.03' L-119.14' C-118.68'	③ Δ-17°36' D-25°14'55" R-226.93' T-35.13' L-69.71' C-69.4'	④ Δ-17°36' D-20°41'24" R-276.9' T-42.87' L-85.06' C-84.73'
⑤ Δ-17°36' D-15°34'59" R-367.7' T-56.92' L-112.94' C-112.5'	⑥ Δ-17°36' D-13°24'02" R-427.6' T-66.19' L-131.34' C-130.82'		

8  
9  
17  
16